

# HOUSE AND LAND PACKAGE



Maddox

Portland Facade Option



From **\$376,200\***

Lot 1428 Oakham Drive, Willandra Estate, Melton (10.5m x 32m / 336m<sup>2</sup>)

## Home and Land package includes:

- Allowance for Site Cost
- Estate Covenants
- Floor Coverings throughout
- Quality Fixtures and Fittings throughout
- Central Ducted Heating throughout
- Stone Benchtop to Kitchen
- 900mm Stainless Steel Cooker and Rangehood
- Panel lift Colorbond Garage Door
- Solar assisted Hot Water Service
- 6 star Energy rating
- Choice of Façades
- Quality Guarantee of a 68 years old brand
- Many Upgrade Options like Alfresco available...

\*Note: The price includes FHOG

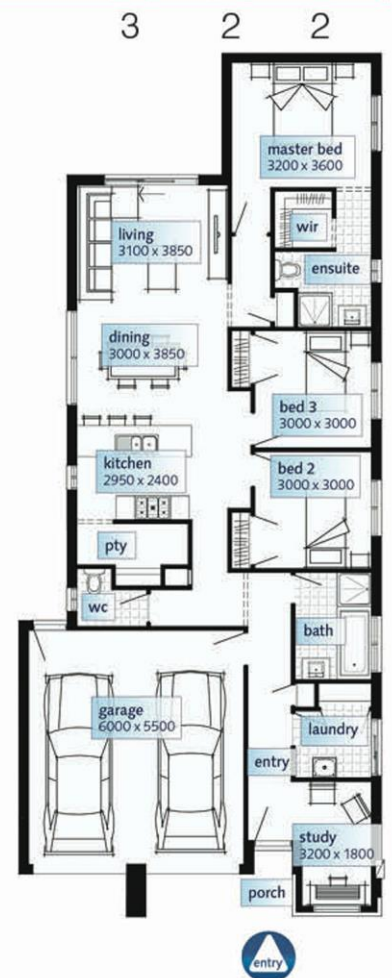
MADDOX		
Dimensions	SQ.M	Squares
Ground Floor	129.85m <sup>2</sup>	13.98Sqs
Porch	5.18m <sup>2</sup>	0.56Sqs
Garage	36.30m <sup>2</sup>	3.91Sqs
Total area	171.33m <sup>2</sup>	18.44Sqs
Width 9.27m		
Depth 22.07m		
Suggested minimum block width: 10.50m		
New Living range specification		

Please Contact:-

**Aneeqa Waqas**

0425 059 995

[Aneeqa.Waqas@Simonds.com.au](mailto:Aneeqa.Waqas@Simonds.com.au)



1300 SIMONDS [simonds.com.au](http://simonds.com.au)

**SIMONDS**  
we're in it together

Images shown for illustrative purposes and may not represent the final product. Prices are based on availability and price of land. Simonds reserves the right to alter any price or substitute any home without prior notice. All house and land packages are subject to developers' final approval. In the event that a Homesite does not have Survey Pegs in place to identify lot boundary then an additional charge will be added to the cost of the house.